



The journey to net zero carbon

Our wider sustainability plans



Welcome and introductions:

Stuart Macdonald, Managing Director, See Media

Jonathan Higgs, Chief Executive, Raven

Melania Tarquino, Strategic Energy Programme Manager at Surrey County Council

Isabel Mills, Environmental SHIFT Assessor at SHIFT Environment



Introduction

Jonathan Higgs

Chief Executive

Raven



Melania Tarquino Strategic Energy Programme Manager Surrey County Council



**Surrey's
Greener
Future**

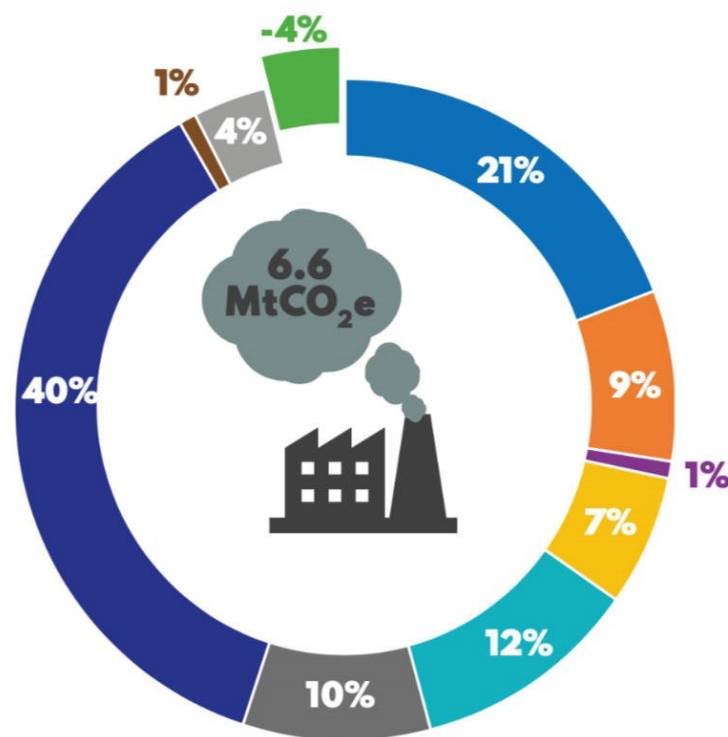
**Surrey's Greener Future
Surrey County Council's Climate Change Delivery Plan
Melania Tarquino – Strategic Energy Manager**

Raven Housing Trust webinar

Surrey's Emissions

In 2018, 6.6 million tonnes of carbon dioxide (CO²) were emitted, made up of:

- Residential gas: 21%
- Residential electricity 9%
- Other residential energy 1%
- Non-residential gas: 7%
- Non-residential electricity : 12%
- Other energy and industrial emissions: 10%
- Road transport: 40%
- Other transport: 1%
- Waste and agriculture: 4%
- Land use: -4%



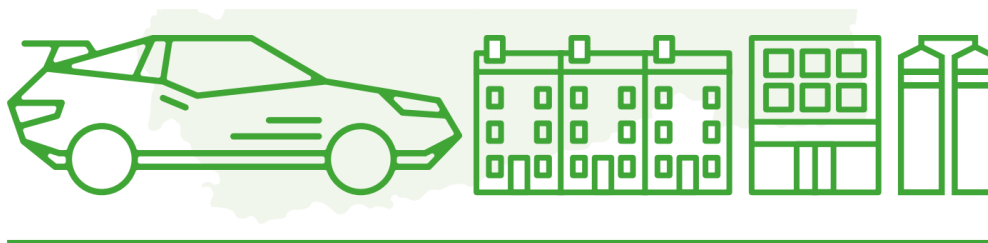
What is Surrey's impact on the climate?

Surrey produces around 6.5 million tonnes of carbon emissions each year; around 1.5% of the UK's total annual emissions.

The majority of Surrey's emissions are from transport (41%) and energy used in buildings (43%).

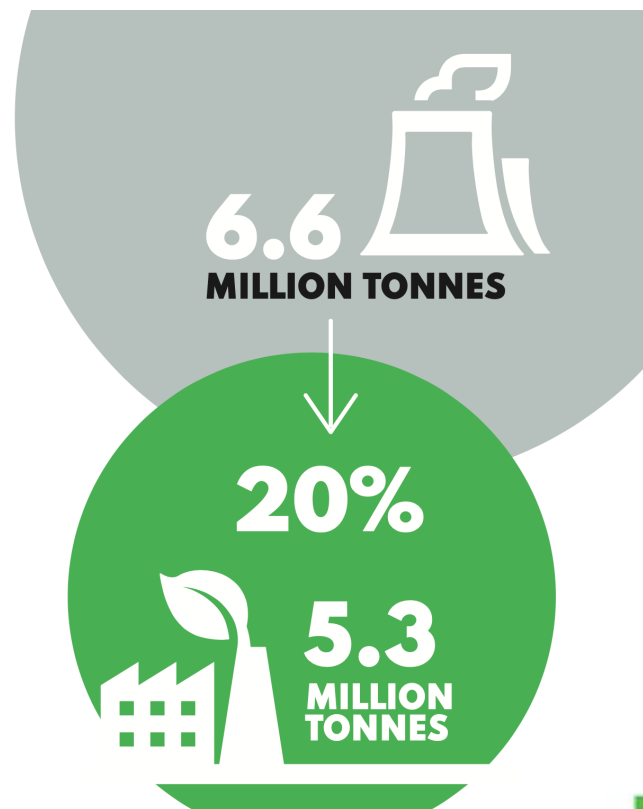
Surrey has above national average car ownership (1.5 per household compared to 1.16) and is one of the top 5 counties for traffic.

Local authority emissions make up less than 1% of emissions in Surrey.



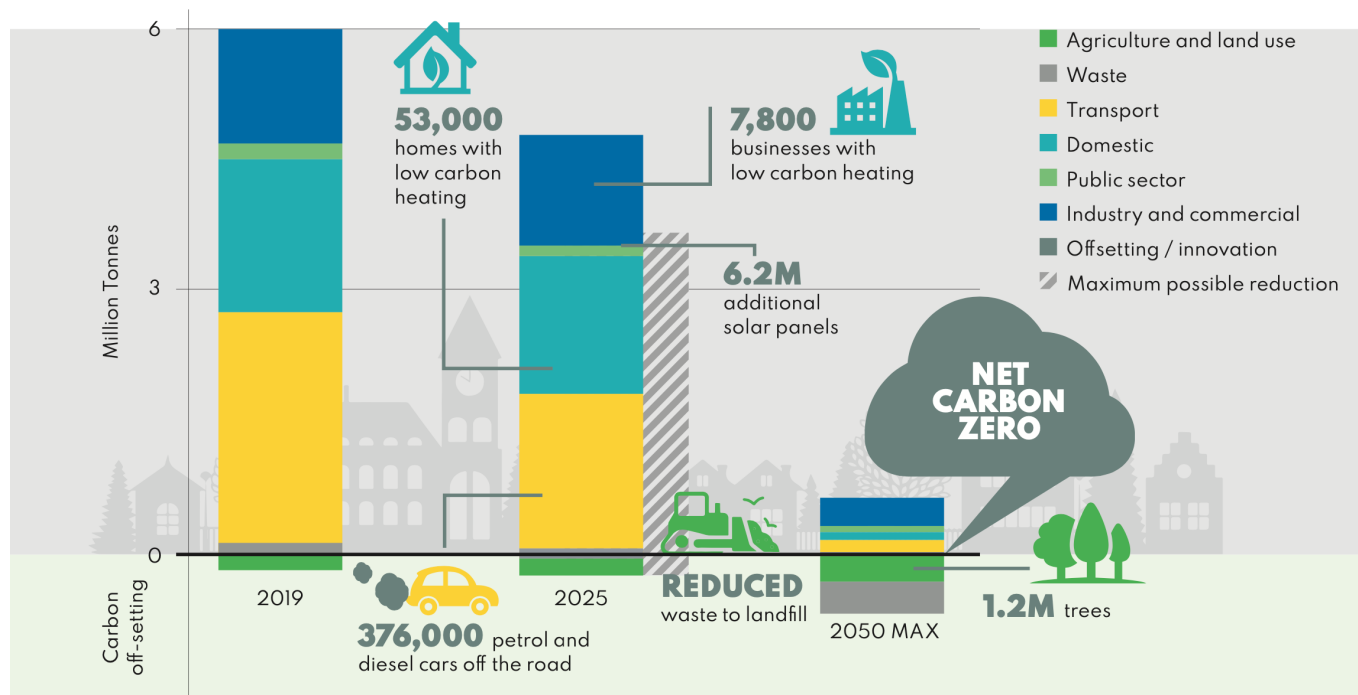
The Scale of the challenge

To be in keeping with Surrey's 2050 net-zero target, carbon emissions need to reduce by at least 20% by 2025.



Our pathway to net zero

Reduction of 1.3m tonnes of carbon by 2025



Role of Local Authorities

- To take action - The climate change delivery plan has identified around 70 actions which build on action already being taken by the Surrey Local Authorities.
- To make change for the benefit of all – Seek to ensure that action on climate change also leads to a better Surrey overall. Whether it is lower fuel bills, cleaner air, less waste, more job opportunities or more accessible green spaces. Where residents may be disproportionately affected by the costs or impacts of climate change, we will make every effort to ensure that no one is left behind in the delivery of the county's target.
- To bring people together and be a strong voice for change
- To build firm foundations from which climate action can grow

None of us can do this alone

“Through collective climate action, we make Surrey a cleaner, healthier place with vibrant communities and a thriving economy”



Surrey Climate Change Delivery Plan (2021 –25) Four key programmes:





GREENER FUTURES COMMUNITIES

Aim: To empower individuals, businesses and communities to make reduce emissions in their own homes, communities and workplaces.

The role of Residents and Businesses

Individuals can reduce their carbon footprint by changing the way they travel, shop, eat and reduce waste.

Home owners, landlord and developers can create energy efficient buildings which use low-carbon heat pumps, and maximise on-site renewable energy.



Local Authority Priorities by 2025

Enabling residents:

- Support up to 20% of elderly residents, low income and off gas households to be warm, reduce bills and decarbonise by accessing Sustainable Warmth national grant funding.
- Encourage carbon emissions reduction in the private-rented sector by enforcing minimum energy efficiency standards and developing a loan scheme for low carbon improvements.
- Accelerate uptake of solar panels to around 10% of residential homes through the Solar Together Scheme.
- Support a move towards active and sustainable travel through a range of measures set out in the draft Surrey Local Transport Planiii.

550 households supported to increase the energy efficiency of their homes through the Green Jump Surrey project

We had more than 7000 registrations and around 1500 residents accepted solar quotes
5.4MW of capacity will be generated, providing a 26,000 CO2t saving over the lifetime of the panels.

Businesses can set ambitious climate reduction targets and offer low carbon goods and services to residents.



Communities can work to improve neighbourhoods by supporting community energy, planting, active travel, sustainable commerce and waste reduction projects.

Enabling Business:

- Offer small businesses LoCASE grants to improve the sustainability of their businesses.
- Support the creation of job opportunities and job transfers to the green skills market through the development of a Green Skills Academy.

Enabling Communities:

- Encourage the expansion of community energy through the Community Energy Pathway which provides the skills needed to undertake community energy projects.
- Support sustainable community projects through Your Fund Surrey and empower the voluntary, community and faith sectors.
- Support the creation of local and sustainable options to travel, work and buy goods and services sustainably.

CO₂ ONE NET ZERO PUBLIC ESTATE

Aim: Local Authorities and other public sector organisations to reduce carbon emissions from their own buildings, vehicle and supply chains

What Public Sector can do

Local Authorities, Surrey County Council, NHS, Police and others in the Public sector can set ambitious targets to reduce emissions across their organisations, services and supply chains; putting sustainability at the heart of every decision.

Local Authority Priorities by 2025

- Work towards a net zero target of 2030 by achieving a 40% emission reduction in Local Authority buildings and vehicles.
- Support the decarbonisation of schools and other public sector buildings.
- Maximise renewable energy such as solar power on public land.
- Drive down emissions from public services including waste management, highways maintenance and social care by putting in place low carbon procurement policies.
- Encourage public sector staff to act sustainably in the way that they travel and carry out their work.



BUILD BACK GREENER

Aim: Design with climate in mind to ensure that planning decisions, regeneration projects and major infrastructure are ready for a zero-carbon future and are adapted to the deal with the impacts of climate change on people and wildlife.

The role of planning, place-making and development

Planning authorities and developers can ensure that everything we build is fit for a low carbon future, by designing net-zero developments which are adapted to the impacts of climate change, and achieve biodiversity net-gain.

Local Authority Priorities by 2025

- Implement the Surrey Infrastructure Plan to ensure that Local Authority projects have high sustainability standards.
- Support low carbon planning decisions by producing guidance that is in keeping with net zero carbon targets.
- Develop a surrey-wide transport network that prioritises walking, cycling, public transport, electric vehicle charging and enable a major upgrade in telecommunications.
- Support the transformation of a low carbon energy system by considering Surrey's potential for solar panels and heat networks.
- Protect residents against the impacts of extreme weather through the development a Climate Change Adaptation and Resilience Plan and implement the Flood Management Strategy and Action Plan.



GROW BACK GREENER

Aim: Manage woodland, green spaces and farmland to maximise the ability to absorb carbon from the atmosphere, grow food sustainably and improve habitats needed for wildlife to thrive.

The role of Land Management

Land owners and managers, including Local Authorities, can help carbon-capture, reduce flooding and support biodiversity through improved management of green spaces.



Local Authority Priorities by 2025

- Develop a Land Management Framework to ensure that many benefits of land are taken into consideration, including carbon, biodiversity and flood protection.
- Bring 3330ha woodland back into management and facilitate the planting of 600,000 trees and hedgerows to lock in more carbon, increase biodiversity and supply sustainable timber and wood fuel.

For more information contact:
climatechange@surreycc.gov.uk

Website:
<https://www.surreycc.gov.uk/community/climate-change>



Isabel Mills Environmental SHIFT Assessor SHIFT Environment

Raven Housing Trust - The Journey to Net Zero



Isabel Mills

Environmental SHIFT
Assessor

SHIFT Environment



Driving
sustainability
in housing



Today

- **Who are SHIFT Environment?**
- **Decent Homes 2**
- **Climate resilience – water stress, flooding and overheating**
- **Biodiversity**
 - **Wider environmental issues**
 - **Q&A**






Vision: “for all homes to encourage sustainable living”

We deliver SHIFT services:

- **SHIFT environmental reporting, benchmarking and accreditation**
- **Related consultancy, SECR, ESG, POE, zero carbon roadmapping**
- **Mainly social housing, but also councils, care homes, developers and the odd millionaire!**

Support

 <p>Committee on Climate Change</p>	<p>"The Committee on Climate Change supports the SHIFT environmental accreditation scheme for social housing. It's work on environmental reporting really highlights crucial environmental issues, such as adaptation to climate change. And importantly SHIFT drives change for a better housing stock." Kathryn Brown, Head of Adaptation, Committee on Climate Change</p>
 <p>IEMA</p>	<p>The Institute of Environmental Management and Assessment have included SHIFT in their most recent guidance: "Climate change and energy – useful resources", February 2020. IEMA is the professional body for everyone working in environment and sustainability.</p>
 <p>NATIONAL HOUSING FEDERATION Sector Supplier Connecting with housing associations</p>	<p>Federation Sector Supplier – "reputable commercial partners who have expertise within the social housing space"</p>



Decent Homes 2

Social Housing White Paper

- Expected to inform DH2
- EPC C by 2030
- Focus on climate resilience:
 - Flooding
 - Overheating
 - Water efficiency/stress
- Green spaces and biodiversity



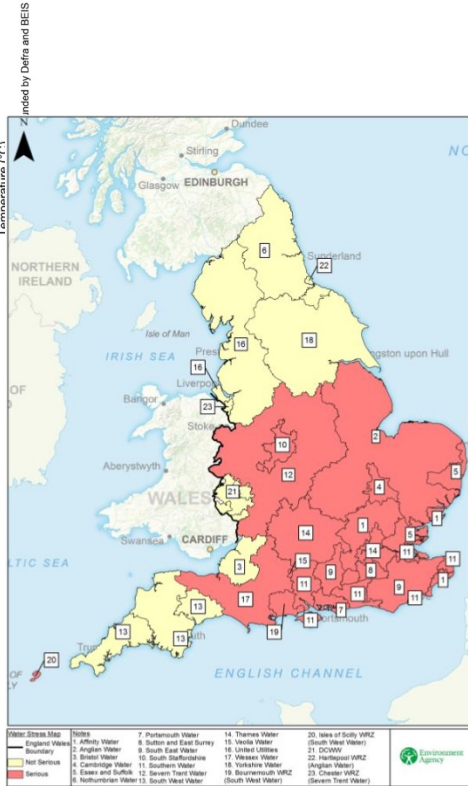
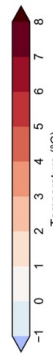
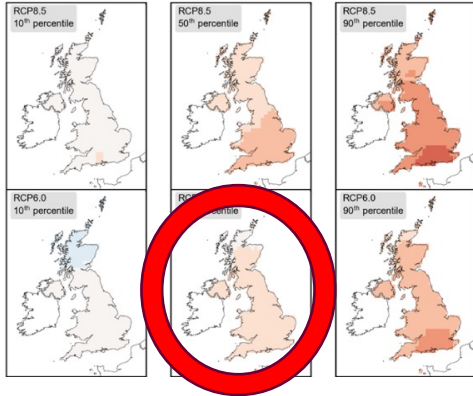
Driving
sustainability
in housing



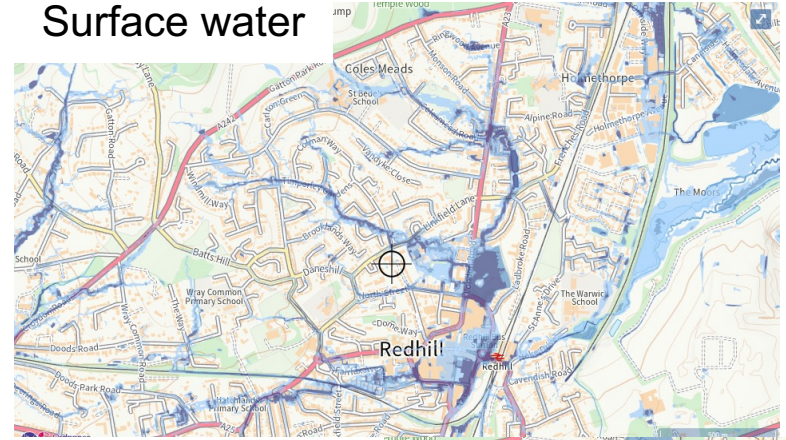
Climate adaptation – flooding, overheating and water stress

Met Office
Hadley Centre

Summer mean temperature anomaly for 2040-2059
minus 1981-2000



Surface water



Rivers and seas



Driving sustainability
in housing



Green spaces and biodiversity

High levels of quality green spaces aligns with:

- Cleaner air
- Flood attenuation
- Summer cooling
- Carbon sequestration
- Recreational value
- Decent Homes 2 in England



Wider environmental issues

Other areas we cover in SHIFT:

- Resident engagement
 - Sustainable transport initiatives
 - Sustainable waste initiatives / fly tipping
 - New developments
 - Responsible sourcing of materials
 - Strategy and management
 - Supply chain
-
- ESG - big driver for environmental issues, all about metrics covered carbon, climate resilience, biodiversity and all of the above!



Driving
sustainability
in housing



SHIFT



Isabel Mills

Environmental SHIFT
Assessor

SHIFT Environment

07718 647117

richard@SHIFTenvironment.co.uk



Driving
sustainability
in housing





Jonathan Higgs Chief Executive Raven



- **Strategic Choices**
- **Decommissioning for sale and regeneration**
- **Retrofit**
- **Fleet**
- **Commercial opportunity**
- **Finance**
- **Working with residents**



- **Strategic**
- **Technical**
- **Customer**
- **Organisational**
- **Opportunity**



Questions?